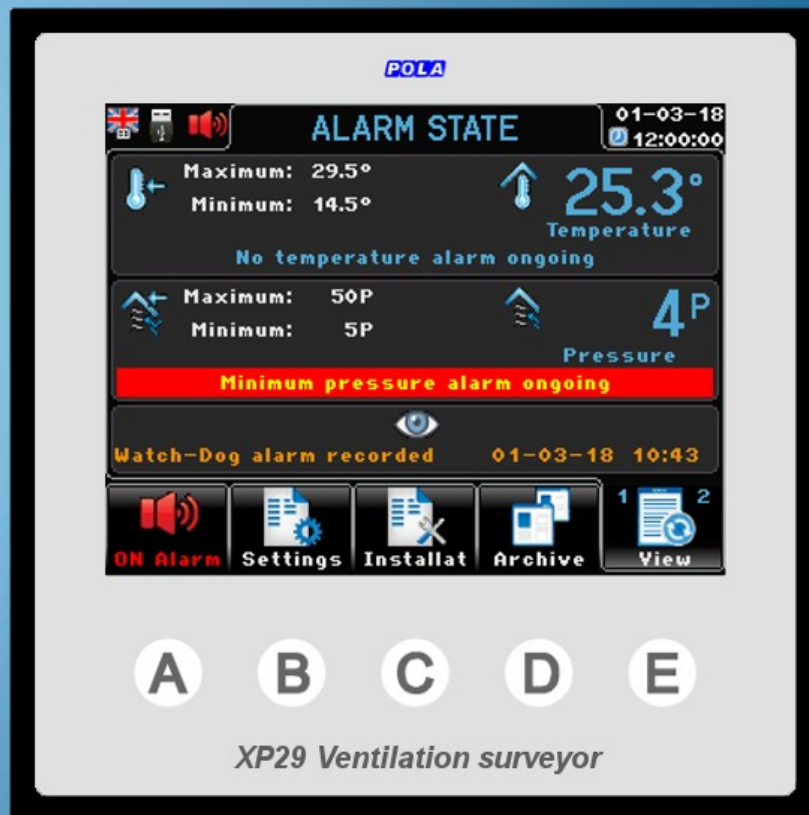


XP line
small size, great power



XP29 ventilation surveyor

Main feature

The main feature of the XP29 is the color display screen (3.5") with 320x240 dots resolution with led backlighting. XP29 is made in DIN 96x96 format and the module dimensions are 96x96mm.

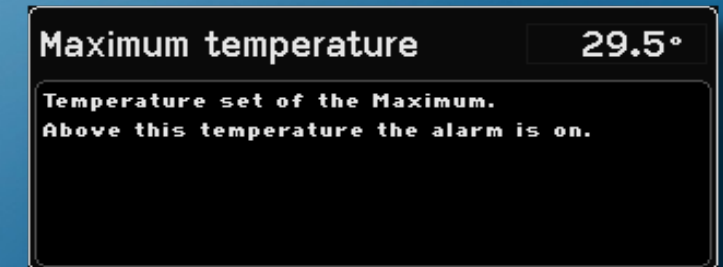


The user interface is easy and friendly. The easy touch screen system gives both the typical "easy to use" approach of a touch screen system and the strength and mechanical protection of a polycarbonate IP54 keyboard.

At every screen the function keys display a different graphic making the program very user friendly.

The user can select the display language: all the wordings, acronyms and "help" texts for programming assistance will be displayed in the chosen language.

Each programming step has its own help screen so the program has a "built in" instruction manual.



ventilation surveyor



XP29 works as complete alarm for a forced ventilation system. It is recommended as independent alarm. It's separated by the installed ventilation alarm and keeps constant monitoring of:

- Mix & Max Indoor temperature
- Min & Max Indoor pressure
- Watch-dog control signal coming from the ventilation control

XP29 is supplied complete with it's SX Temperature probe and it's connected to the DP59/W depressiometer to keep control of the indoor static pressure (if any depressiometer is installed).

The daily archives keeps a record of the following parameters:

- Recorded alarms
- Minimum, Average and Maximum indoor temperature and static pressure

Alarms operation diagrams

Temperature alarm

Minimum temperature alarm set

This alarm works to signal the heating system is not working or there is a malfunction which is causing the indoor temperature reduction.

Maximum temperature alarm set

Birds can suffocate if not properly ventilated. The max alarm temperature has to be set according to the type of birds, type of ventilation system and type of outdoor climate conditions.

Ambient temperature (°C)

Pressure alarm

Minimum pressure alarm set

When ventilation stops, the negative pressure goes to zero. This can cause suffocation of birds. We advise to set this alarm to a slightly lower depression value as generated by the minimum ventilation level. To avoid unproper interventions of this alarm during the switching off time of fans in air exchange mode, we recommend to set a response delay. This delay has to be higher than the duration of the air exchanges cycle (as set in the ventilation main module).

Maximum pressure alarm set

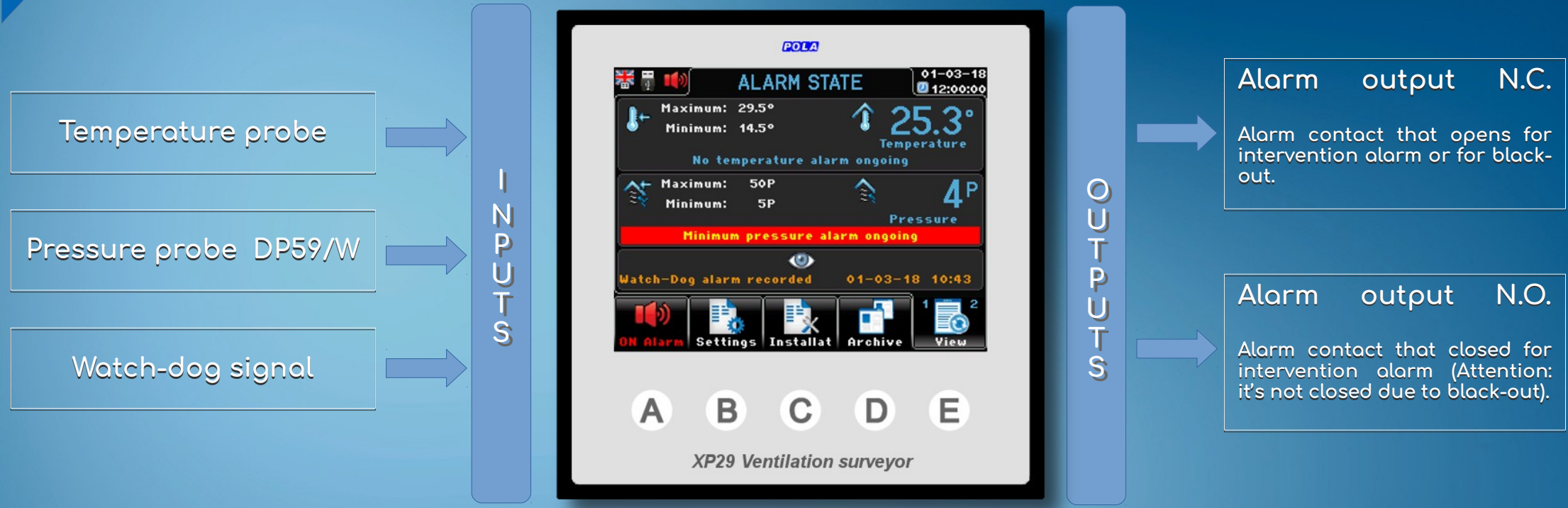
This alarm works to signal the air inlets are out of order and did not open.

Ambient pressure (Pascal)

Watch-dog alarm

In case of failure to connect to the control module (Qfarm-Xfarm-XP) this alarm allows to signal this anomaly.

Inputs and outputs



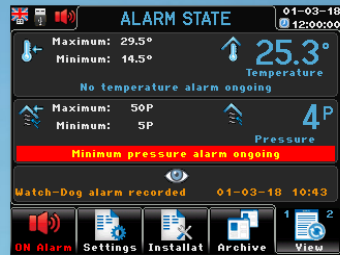
Other available connections

- **USB plug**
XP29 has a USB plug on the back.
When selecting the USBP option you can get a USB plug with a (IP65) protection cap externally mounted so you can access the USB without having to go to the back of the unit.

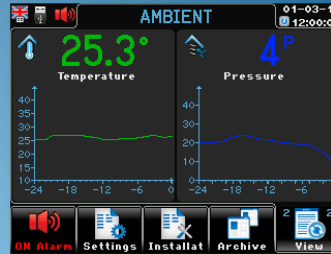
Sample screenshots



Viewing screens



Viewing operating condition



Viewing operating condition



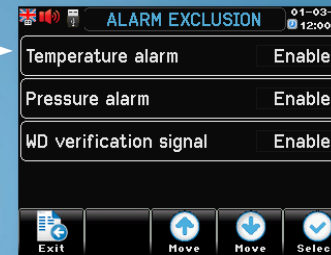
Settings screens



Settings selection



Maximum alarm Temperature setting



Alarm exclusion setting



Archive screen



Archives to display selection

ALARMS ARCHIVE 01-03-18 12:00:00

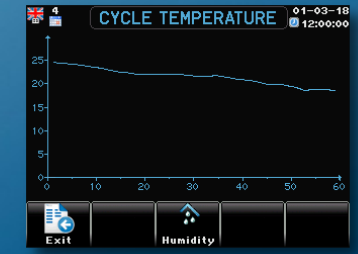
Alarm type	Date	Hour
Minimum temperature	15-01-18	10:54
Maximum temperature	00-00-00	00:02
Minimum pressure	00-00-00	00:03
Maximum pressure	00-00-00	00:04
WD verification signal	00-00-00	00:05
Temperature probe failure	00-00-00	00:06
DPS9/W pressure failure	00-00-00	00:07
DPS9/W pressure failure	00-00-00	00:08

Page 1 of 8
Exit Up page Down page

Alarms archive

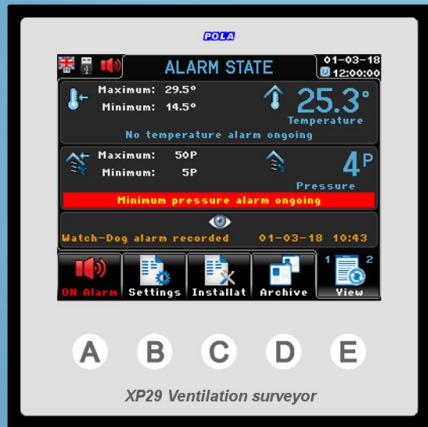


Temperature & pressure archive



Temperature chart

Data transfer



The communication with the outside world is performed by USB key.

→ **Export archives**

XP29 save in the USB memory a file containing all the day by day recorded data of the cycle.

Connecting the USB key to a PC and by using the XP29 Dialogue software you can browse the recorded data in grid or graph formats.

→ **Importing / saving the setting**

You can save a file with all back-up infos on a USB file.

Saved settings can be uploaded on XP29 anytime by a user friendly procedure.

Available options

<i>Model</i>	<i>Description</i>
XP29	ventilation surveyor (DIN96 panel mounting)
----- <i>Options</i> -----	
W01	IP54 box for wall mounting + gasket + transparent cover
USBP	USB IP65 external plug (to be mounted externally, for access to the USB without the need to access the back of the XP29)
DP59/W	Air pressure transmitter (only if it is not already present in the system)

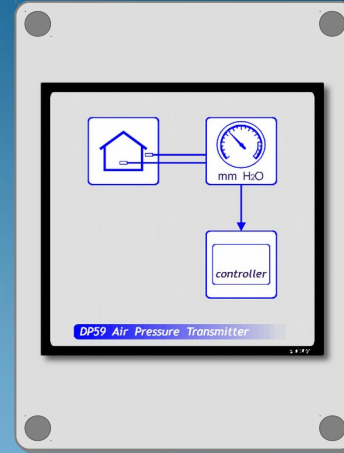


Available options



XP29

W01



DP59/W



USB

POLA

www.pola.it

40th

40 YEARS OF INNOVATION